

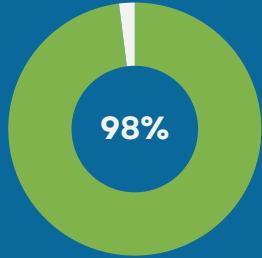


glass NOT TRASH

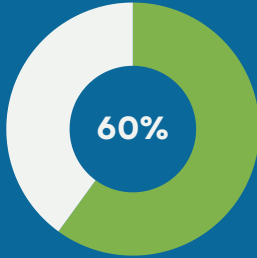
Lawrence-Mercer Recycling/Solid Waste Department



Purple Bin



Curbside



Glass from our purple bins (source-separated glass) is virtually 100% recyclable into new bottles and jars. Curbside collection only recovers about 60-70% of this glass for recycling.

BINS NEAR YOU

New Castle

430 Court St.
New Castle, PA 16101

Ellwood City

5153 Ellwood Rd.
Ellwood City, PA 16117

Greenville

278 South Mercer St.
Greenville, PA 16125

Hermitage

541 Mercer Ave.
Hermitage, PA 16148

Mercer

463 North Perry Hwy.
Mercer, PA 16137



FACT & RESOURCE REFERENCE SHEET

Lawrence-Mercer Recycling & Solid Waste

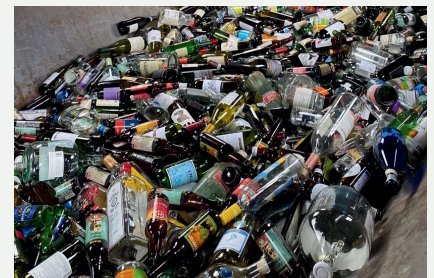
“ Our mission is to develop and implement both the Lawrence County and Mercer County Municipal Solid Waste Management Plans. We make our vision a reality by supporting local communities in their waste and recycling efforts.

GLASS RECYCLING

Source-separated glass (glass collected separately from other recyclables) is the most efficient way to collect glass containers for recycling. It saves time, money, and energy. This program is a public service offered by the County Commissioners to provide recycling opportunities for glass bottles, jugs and jars.



SINGLE STREAM



SOURCE SEPARATED

CONNECT WITH US

(724) 658-6925
430 Court St. New Castle, PA 16101



OUR WHY

Glass can be recycled endlessly without loss of quality or purity and is a great choice for food and beverage packaging. Residents have been requesting more options to recycle glass locally. Mercer and Lawrence County answered this request by providing residents with an option to see their glass recycled into new glass products and keep this resource out of landfills. We want you to be confident and know that your glass is being recycled when you use our program.

OUR PROCESS

When the purple bin is full, it is swapped out with an empty glass recycling bin. The full container is hauled to a local bunker for unloading. The bunker serves as a local consolidation site for accumulating glass containers and will hold about 20 tons of glass. When full, the County's glass processor, CAP Glass, will pick up and transport the glass to their processing facility in Mount Pleasant, PA. At their facility, the glass is crushed, cleaned, sorted, and sized for use by the glass manufacturing industry. The resulting "cullet", an industry term for furnace-ready recycled glass, is used by Owens-Illinois in Brockport, PA to manufacture new glass bottles.



FOLLOWING GLASS RULES

ACCEPTED MATERIALS:

Glass food and beverage containers ONLY
(Bottles, Jugs, Jars)



UNACCEPTED MATERIALS:

Mirrors, Trash, Porcelain, Ceramics, Crystal
Bakeware, Stemware, Light bulbs, Windows



HOW TO USE THE RECYCLING BIN

1. Rinse the containers and remove any caps, corks, and lids. Labels may stay on.
2. All colors of glass are acceptable, separating is not necessary
3. Take all boxes, bags, and collection containers with you when done - Do not place in bin
4. Please shut the sliding doors when finished.

This program would not have been made possible without the commitment and generous support of the PA Department of Environmental Protection, the Glass Recycling Foundation, CAP Glass, the City of Hermitage, and our site sponsors. This publication is funded by a PA DEP 902 Recycling Grant and a grant from the Glass Recycling Foundation.